

Port Angeles Community Players  
& Johnson Electric Company presents

PACCP



Directed by Melody Todnem & Shannon Cosgrove  
by LOCAL PLAYWRIGHT **Shannon Cosgrove**

**December 5 - 21, 2025**

Performances Friday & Tuesday @ 7 pm  
Saturday & Sunday @ 2 pm

**PACommunityPlayers.org | 1235 E Lauridsen Blvd.**

# Become a Donor Today!

Looking to make a bigger impact and help put the **community** into community theater? Donor levels start at just \$250 and come with many perks:

**Voting privileges, Flex Tickets for play(s) of your choice, access to Members Only events, FREE beverages, reusable PACP drink cups, recognition in season programs, signed programs, backstage tours, and more!**



Scan the QR code to learn more or visit <https://pacp.ludus.com/donate.php>

## Thank You Donors!

To our **STAR Dmitri Gerasimenko**, our **MANAGERS Martin & Linda Gutowski** and our **PRODUCER Denny Evans!**

*"The greatness of a **community** is most accurately measured by the compassionate actions of its members."*

**Coretta Scott King**

**Local news, Onair,  
Online, *all the time!***

# KONP

# NEWS RADIO

**1450 AM** / **101.7 FM Port Angeles** / **101.3 FM Sequim**

[MyClallamCounty.com](http://MyClallamCounty.com)

## Volunteers Needed!

**Our non-profit 501(c)(3) theater is supported solely by volunteers, on stage and behind the scenes.**

Do you love to organize, call the shots, or take directions?

Or maybe you can work a screw gun, sew an outfit, use a paintbrush, make fun props, fundraise, hand out programs, post a photo on social media, run a vacuum cleaner, pull weeds, or have a skill we don't know we need?

**We'd love to have you come play with us!**

To learn more go to our website at:

**[PACommunityPlayers.org](http://PACommunityPlayers.org)**

or send an email to:

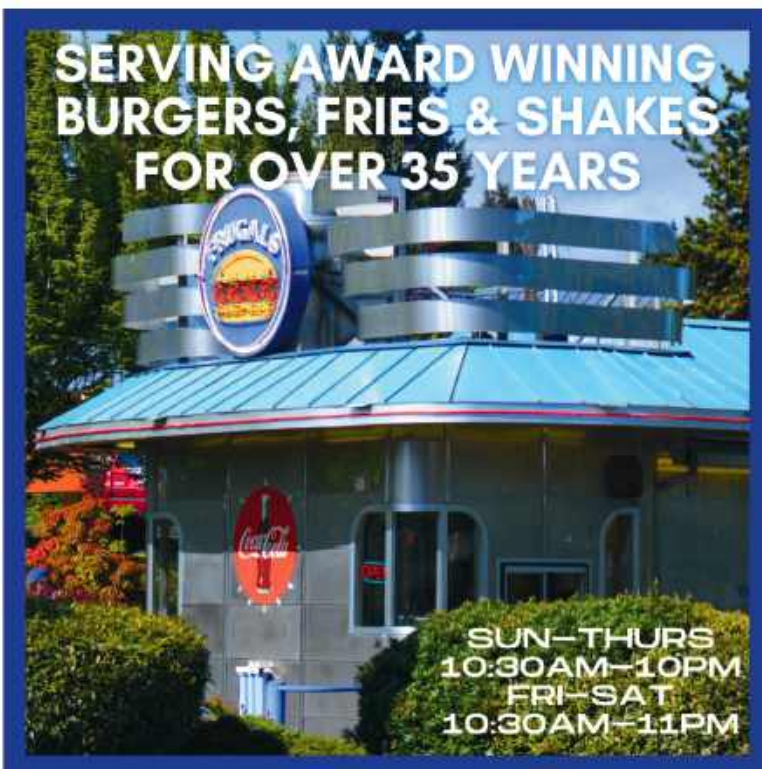
**[VolunteerWithPACP@gmail.com](mailto:VolunteerWithPACP@gmail.com)**

# Sugar Plum Done

Written by local playwright Shannon Cosgrove  
Directed by Shannon Cosgrove & Melody Todnem

## Cast

Bootsy von Reindeer, Ancient & Eldritch Horror Santa	Azalea Fidazzo Stanley
Jackie Frost, Choreographer	Benjamin G. Komar
Sprinkles T Elf, Announcer #2	Cora Sandoval
G the House Elf	Jessup Coffin
Mrs. Clause	Jonathan "Sterling" Ward IX
Denim the Influencer, Announcer #1	Karen Twight
Sugar Plum Fairy	Kyle Kurtz
Nancy von Reindeer	Lisa Vanderheiden
Buttons von Reindeer	Mara Jordan
Vidalia the Influencer, Choreographer	Marella Coffin
Kitchen Elf, Transition Elf	Matilda Redlin
Fluffy Bear Cub Reporter	Piper Bruch
Spritzer T Elf	Piper Wikert
Noodles T Elf	Rainer Warzecha
Mona Snowperson	Saphyre Billman
Bixby von Reindeer	Stephenie Bennett
Lillian Puffnell	Taezia Hanan
Camera Guy, Prince	Tracey Hale
Spicy T Elf	Virgil Hayes
	Zade Harris



**Buena Luz Bakery**  
PA-WA  
"THE GOOD LIGHT"

Locally owned, small bakery offering fresh baked bread, pastries, house made sandwiches and full coffee/tea service.

1105 S Eunice St, Port Angeles, WA 98362

Open Tue - Fri: 6am - 2pm  
Sat: 7am - 2pm

# Behind The Scenes

## Production Team

### **Directors:**

Melody Todnem & Shannon Cosgrove

**Stage Manager:** Travis Lester

**Set Designer:** Jaymie Crafts

**Music Director:** Morgan Bartholick-Lemaire

**Choreographer:** Naomi Alstrup

**Prompter:** Jahanna Stewart

**Set Team:** Jessup Collins, Marella Collins,  
Mara Jordan, Kristine Henshaw,  
Melody Todnem, Karen White,  
Cedric Twight, Jahanna Stewart

**Props:** Travis Lester, Steve Chamberlain,  
Debbie Young, Barb Frederickson,  
Barbara Jo Maier

**Costumer:** April Driesslein

**Wardrobe Team:** Tara Collins,  
Jahanna Stewart, Evelyn McNitt,  
Melody Todnem

**Lighting/Sound:** Trina Lapinsky,  
Ken Winters, Sarah Winters

**Backstage Helpers:** Travis Lester, parents

**Christmas Tree Mural:** Kristine Henshaw

## Business Team

**Marketing:** Ken Winters,  
Jessica McKenzie, Marissa Leeann Rose

**Box Office/IT:** April Lawson

**Bar Manager:** Jaymie Crafts

**Volunteer Coordinator:** Melody Todnem

**Website:** Debbie Young

## 2025/2026 Board of Directors

**President:** Ken Winters

**Vice President:** Melody Todnem

**Treasurer:** Jaymie Crafts

**Secretary:** Rebecca Senne

### **Board Members:**

Steve Chamberlain, April Lawson,  
Jamie Robinson, Jessica McKenzie,  
Randy Powell

Edward Jones

> [edwardjones.com](http://edwardjones.com) | Member SIPC

## Build the future of your dreams with us.

Whether it's investing some extra income, preparing a future for your family with your retirement secured, or saving for a home or education costs, we're here to coach you through it.

Contact us today to start creating a financial strategy tailored to your specific needs.



**Lisa Millar**  
Financial Advisor  
112 Del Guzzi Dr Suite 7  
Port Angeles, WA 98362  
360-452-8800



# Director's Notes

**Greetings of the season! Thank you for joining us for a little holiday mayhem.**

*Christmas*. It's a loaded word. For people who celebrate it, it can call to mind hot tea and a good book on Christmas Eve. For others, it means family, food and fun. Still for others, it is a nauseating swirl of impulse purchasing for people whose names you can't remember so you don't show up to a party you'd rather not go to empty handed. As for me, I love the lights and smells of Christmas. The other things? Not so much.

My views on the holiday were only reinforced by watching the 1964 classic, *Rudolph the Red-Nosed Reindeer*. It's a ripping yarn most of us are familiar with, but I remember a viewing when my kids were little. I was excited to introduce them to the classics of my childhood, and after viewing it, I couldn't get over the fact that Santa was... kind of a jerk. I won't engage in a very well-worn rant here, but it stayed in my mental database.

When I offered to write a Christmas show for the Playhouse, I wondered what facet of Christmas I should focus on. What came to me was that *this might be the perfect place to air my Santa-based grievances*. And so I did! Welcome to NPHQ, where Santa took off for a residency in Vegas, Rudolph could be anywhere, and Frosty left his new wife with a snowball in the freezer. Eloisa Clause, wife number two, has no interest in cooking, and the few creatures who haven't bailed on the North Pole aren't exactly the A-squad. Add a few influencers, the Ancient & Eldritch Horror, the Sugar Plum Fairy, and you have a Christmas Tale that might reflect your own view of the holidays! Prince also shows up, to bless the proceedings in his own unique way.

I am continually inspired by the level of talent we have in this community. I love putting kids and adults together with a script. Once the young ones see adults being silly, they forget to be self-conscious and you can see their confidence rise. This year is no exception. I'm honored to work with these actors, at this theater, in this town. I'm not a fan of Christmas, *but I'm a huge fan of our community*, and am grateful for all the ways I've been allowed to create here. Port Angeles. It's *weird*. It's *wonderful*. It's *home*.

We hope you LOL. We hope you hoot. Chortle. Guffaw. It's fuel for a cast and crew that have worked tirelessly to create NPHQ, and *laughter is their fuel*. Thank you for being here.

**Now on with the Ho Ho Show!**

**-Shannon Cosgrove Playwright | Co-Director**



Open Lunch & Dinner,  
**Thursday - Sunday | 11:30 - 9**  
117 ½ W First St, Port Angeles

Amazing Changes Hair Studio & Spa  
Soothe Your Soul  
Relieve Stress  
Relax Muscles  
Cleanse Skin  
In Our Luxurious Steam Spa  
Full hair and nail services also available  
Kyle Ellis - Cosmetologist 118 North Liberty Suite A 360.491.0006

**Rebecca's**  
Hair & Nail Salon

Men's & Women's Cuts / Color / Mani/Pedis / Gel Nails

Sip a cup of tea while being pampered  
in a relaxing atmosphere

970-946-0663

308 East 8th St. Port Angeles

# Meet Our Cast & Crew



**Azalea Fidazzo Stanley** (*Bootsy von Reindeer | Ancient & Eldritch Horror*) New to our stage but not theater, we welcome Azalea. Acting credits include Martha in High School Musical, Head Munchkin, Flying Monkey and Citizen of Oz in Wizard of Oz at Pok-O-Playhouse in New York.



**Benjamin G. Komar** (*Santa*) The majority of Benjamin's stage experience has been as a musician, singer, songwriter for the inter-dimensionally renowned Spageage Polymers. Acting with PACP, OTA and Shakespeare in the Woods, where during a production of "Much Ado about Nothing," he infamously married his far more talented wife, the fabulous Emma Easton. Their son, Marten, age 7, has staged many performances in their living room.



**Cora Sandoval** (*Jackie Frost | Choreographer*) has been in several plays including "Ethel Mermaid". She loves sleepovers with friends, playing with Megan and Moriah and her 2 cats.



**Jessup Coffin** (*Sprinkles T Elf | Announcer #2*) Father to three amazing kids. Husband to a wonderful wife. Program Coordinator for a Conscious Fathering class to new parents. Farmer to a ton of critters. Now actor in a cadre of awesome community members.



**Johnathan "Sterling" Ward IX** (*G the House Elf*) is delighting us with his "non-speaking" part as his face and body sure tell a story. He has a brother, sister, and a dog named Dahlia. He enjoys walking and training his dog, painting, eating fruit and acting.



**Karen Twight** (*Mrs. Clause*) After a multi-decade hiatus (real life), Karen has returned to the stage with questionable knees but unwavering enthusiasm. When not teaching kids how to fake faint or cry on cue through Field Arts & Events Hall's arts education program, she's been reliving her glory days as a Scottish enchanter and Galahad's mum (Spamalot), a singer in Sweeney Todd and the OTA Singers. After gracing the stage in Sequim, she has wandered onto our stage as Mrs. Clause.



**Kyle Kurtz** (*Announcer #1 | Denim the Influencer*) is a recent transplant to Port Angeles, from Kansas city where he lived all his life (go Chiefs!). He is a former morning radio producer as well as cheer and gymnastics coach, but now loves his new home among the natural beauty of the Olympic Peninsula. When he is not working, you can find him enjoying all PA has to offer with his fiancé, Lisa (aka Sugar Plum Fairy), and two dogs, Dodger and Loki.



**Lisa Vanderheiden** (*Sugar Plum Fairy*) California native and proud theatre kid at heart, Lisa has returned to the stage after a 15-year intermission! After years in Kansas City perfecting the art of applause from the audience side, she is thrilled to trade the seats for the spotlight once again. When not performing, Lisa can be found chasing sunshine, sipping good coffee, and laughing far too loudly. "Delighted to be part of this production – thanks for supporting live theatre and have a happy Christmas!"



**Mara Jordan** (*Nancy von Reindeer*) enjoys acting in plays - the latest was "The Lion King" with Ghostlight Productions. "My parents and I live with our pets Raven and Milli. When not acting I enjoy singing, dancing and spending time with my friends and pets."



**Marella Coffin** (*Buttons von Reindeer*) "My last play, "Alice in Wonderland", here at PACP, left me wanting more. When not acting , I live with my pets, 2 brothers and parents. I love reading books, martial arts, swimming, dancing and crafting . I helped paint the stage."



**Matilda Redlin** (*Vidalia the Influencer | Choreographer*) is excited to share the stage with her mom, Stephenie Bennett (*Mona*). She loves acting, training her dogs Cowboy and Critter, and making art. Matilda hopes to become a veterinary surgeon when she's older. She feels most at home in a world full of paws, art and plenty of imagination.



**Melody Todnem** (*Co-Director*) "The best part of theater is trying out everything that makes theater tick. Having had fun with stage/production management, costuming and set building/painting, I decided to try directing. What an awesome ride! I am so happy to present this Christmas gem to you this holiday season."



**Piper Bruch** (*Kitchen Elf / Transition Elf*) was seen recently in PACP's *Alice in Wonderland* - Piper says it just makes her want to do more theater. Her favorite things to do are theater and soccer. Piper loves to make people laugh and smile.



**Piper Wikert** (*Fluffy Bear Cub Reporter*) Growing up in PACP's Children's Theatre makes Piper want to be on stage. She has dogs and fish at home, loves theatre and watching musicals and wants you to know she has JIA (Juvenile Idiopathic Arthritis).



**Rainer Warzecha** (*Spritzer T Elf*) is somewhat new to Washington and Port Angeles. He enjoys playing soccer, baseball, and hockey. Rai is in High School attending college in the Running Start program. This play is an opportunity for him to make new connections and help him settle in here in Port Angeles.



**Sapphyre Billman** (*Noodles T Elf*) is a novice on the stage and has taken to it like a fish in water! She lives in a crowded home with 1 sister, 6 dogs, 3 cats, 2 snakes, 1 rabbit, and 1 lizard... and oh ya, parents in there somewhere!



**Shannon Cosgrove** (*Playwright / Co-Director*) is always writing. Plays, novels and poetry about her mom. When she's not writing, she's with her family and 4 cats. She walks a lot. She's probably studied you at the laundromat or a coffee shop.



**Stephenie Bennett** (*Mona Snowperson*) is delighted to be back for another season on stage. Performing alongside her daughter, Matilda Redlin (*Vidalia*), is one of the highlights of her year. She's grateful for the laughter, teamwork, and community that come with every rehearsal!



**Taezia Hanan** (*Bixby von Reinder*) brings her dance background to the stage with gusto! She enjoys playing with her friends, her dog Salty, and soccer.



**Tracey Hale** (*Lillian Pfuffnell*) this is Tracey's first foray onto our stage and it is giving her a workout! She lives with 3 dogs and enjoys eating, dancing, and ordering quirky stuff from Temu. She asks that everyone be kind to animals.



**Travis Lester** (*Stage Manager*) "While I have only been volunteering with PACP for a short time, I really can't imagine not being a part of this organization. Sugar Plum Done is my first time as the Stage Manager and being a part of and watching all of the work, the people that it takes to be able to bring a show to the stage is awe inspiring. I would like to thank my amazing wife. I couldn't do it without her, and to all of my new friends. Thank you."



**Virgil Hayes** (*Camera Guy / Prince*) was born in San Antonio, Texas, and moved to the peninsula in 2024. He attends Dry Creek Elementary school. Virgil (10) loves making friends wherever he goes. He likes to write parody songs, sing, make up character voices, and ride his bike



**Zade Harris** (*Spicy T Elf*) really enjoys making people smile, laugh or feel something through a performance. He enjoyed learning his craft in PACP's Children's Theater and now embraces Panto performances.

## ***Interested in serving on the Board of Directors?***

We're always looking for new people (*young and old*) who love theater.  
Please reach out to us. We'd love to discuss the possibility further.

**Contact us at [PACommunityPlayers@hotmail.com](mailto:PACommunityPlayers@hotmail.com) or 360-452-6651**

**A VERY Special Thank you to Pen Print who takes great care of us and ALL of our printing needs!**

## *Full Service Printing*

**Business Cards • Brochures • NCR Forms**

**Envelopes • Letterhead • Newsletters**

**Full Color • Digital Color Copies**

**Blue Print Copies • Posters**

**Large & Small Format Laminating**

**Foam Mounting**

**Spiral Binding • Comb Binding**



481 Daisey King Rd.  
Sequim, WA 98382  
360.457.3404 • info@penprintinc.com

*The Printers on the Peninsula*

---

**A VERY Special Thank you to Harbinger Winery  
our bar sponsor for the season.**



# Harbinger

WINERY

**The Harbinger tasting room is open daily from 11am-6pm.  
We have both indoor and outdoor service and are following  
all county and state guidelines. Stop by and visit us soon!**

# COMING SOON THIS SEASON



Sign up for our newsletter to hear about future shows, auditions, volunteer opportunities & more!

Visit our friends at  
Bainbridge Performing Arts!

BAINBRIDGE PERFORMING ARTS

## THE HUNCHBACK OF NOTRE DAME

DECEMBER 5<sup>TH</sup> - 21<sup>ST</sup>  
PREVIEW NIGHT DECEMBER 4<sup>TH</sup>

### TICKETS AT

BAINBRIDGEPERFORMINGARTS.ORG

Port Angeles Community Players & Johnson Electric Company presents

Everything that can go wrong, does!

# THE PLAY THAT GOES WRONG

BY HENRY LEWIS, JONATHAN SAYER & HENRY SHIELDS  
DIRECTED BY JESSICA MCKENZIE

March 13 - 29, 2026

Performances Friday & Tuesday @ 7 pm  
Saturday & Sunday @ 2 pm

PACCommunityPlayers.org | 1235 E Lauridsen Blvd.

Presented by arrangement with Community Play Services under license from Mischief Worldwide Ltd.

Port Angeles Community Players & Johnson Electric Company presents

# Miss HOLMES

by CHRISTOPHER M. WALSH  
directed by JANICE PARKS

"Being the world's greatest detective is even harder when one is metaphorically doing it **backward** and in **high heels**." -Chicago Tribune

MAY 29 - JUNE 14, 2026

Performances Friday & Tuesday @ 7 pm  
Saturday & Sunday @ 2 pm

PACCommunityPlayers.org | 1235 E Lauridsen Blvd.

Produced by special arrangement with THE DRAMATIC PUBLISHING COMPANY of Woodstock, Illinois

*Helping to light up your holiday season.*



**360-477-4594 | [admin@johnsonElectric360.com](mailto:admin@johnsonElectric360.com)**  
**COMMERCIAL - RESIDENTIAL - SOLAR - INDUSTRIAL**